

Age Matters: Colorado Population Trends

July 22, 2024

State Demography Office, Department of Local Affairs
Demography.dola.colorado.gov



COLORADO
Department of Local Affairs

State Demography Office

demography.dola.colorado.gov

- Study Colorado's population
- Neutral, non-partisan, non-policy office
- Data is publicly available and used by:
 - State agencies
 - Local governments
 - Non-profit organizations
- Services provided:
 - Demographic and Economic data
 - GIS/Cartography
 - Technical assistance, training, outreach
 - Over 100 presentations every year



State Demography Office

demography.dola.colorado.gov



DOLA > Divisions & Programs >

State Demography Office

State Demography Office

The primary source for Colorado population and demographic information

The State Demography Office provides population estimates and forecasts for Colorado's regions, counties, and municipalities developed by the State Demography Office and the U.S. Census Bureau.

You can access data visualizations, data spreadsheets, data lookup applications, data spreadsheets, data links, and technical documentation by topic or geography by clicking on one of the buttons on the left.

New Items (2/16/2024)

- [2022 Population Summary](#)
- [Colorado Results from the American Community Survey 2018-2022](#)
- [Total Estimated Jobs 2022: Colorado's Employment Landscape](#)
- [Task Force to Study Corporate Housing Ownership - HB23-1253 Program Page](#)
- [2023 State Demography Summit Presentations and Videos](#)



Navigation Menu

[Home](#)

[Colorado Population Trends: Story and Visualization](#)

Data by Topic

[Population Totals, Age and Race/Hispanic Origin](#)

[Births, Deaths, and Migration](#)

Select County:

Population Estimates by Age

[Single Year of Age Lookup](#)

Ages	Number, 2021	Number, 2022	2030 Forecast
Total	5,811,129	5,838,738	6,386,548
0 to 17	1,260,302	1,250,481	1,260,206
18 to 24	536,615	539,270	584,322
25 to 44	1,712,664	1,727,962	1,878,132
45 to 64	1,402,333	1,392,996	1,477,447
65 +	899,215	928,029	1,186,441

Births, Deaths, and Migration

Housing Characteristics, 2022

[County Population and Housing Lookup](#)

Housing Type	Number	Change from 2021
Total Housing Units	2,598,686	2.21%
Household Population	5,715,606	0.34%
Group Quarters Population	123,130	7.36%
Annual Building Permits	48,839	-13.60%
Household to Population Ratio	2.2	

Housing Tenure, 2022

Selected Statistics, 2022

[American Community Survey 2018-2022 5-year data](#)

Topic	Number	Change from 2013-2017 ACS	U. S. Rank
% living in Poverty	9.55%	↓	46
% with Bachelor's Degree+	43.73%	↑	2
Median Household Income	\$87,598	↑	9
Median Home Value	\$465,900	↑	5
Median Gross Rent	\$1,594	=	4



COLORADO
Department of Local Affairs

<https://demography.dola.colorado.gov/>

Population Trends

- Population growing at a slowing rate - births down, deaths up
- Migration and mobility slowing
 - Harder to attract and retain labor force
- Concentrated growth
- Aging - impacts everything
 - Largest share of future growth is the 65+
 - Prime working age and youth becoming smaller share of total pop
- Increasing racial and ethnic diversity



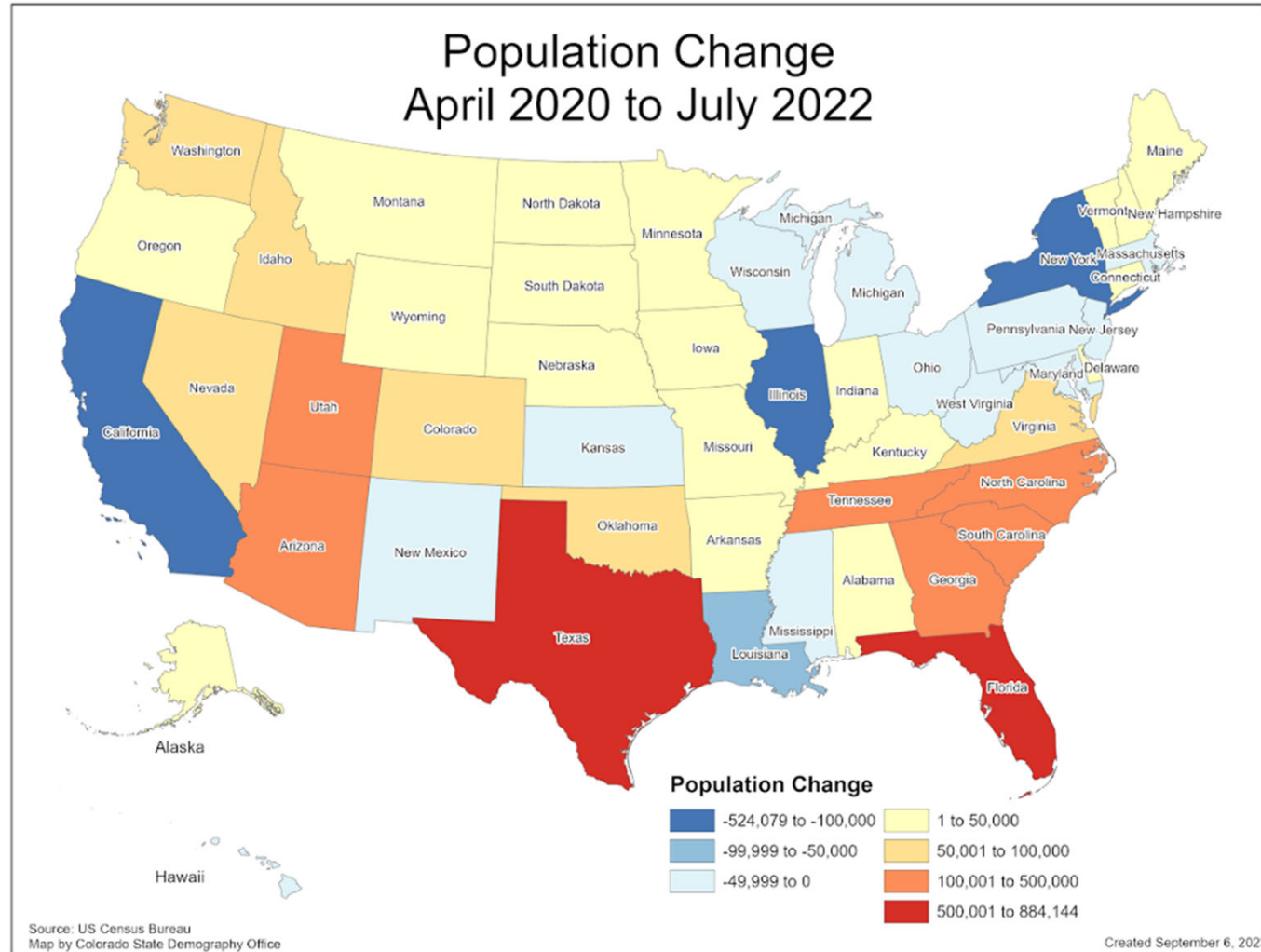
Big Picture: Growth is Slowing

United States

- Growth rate 0.6%
- 18 states lost population

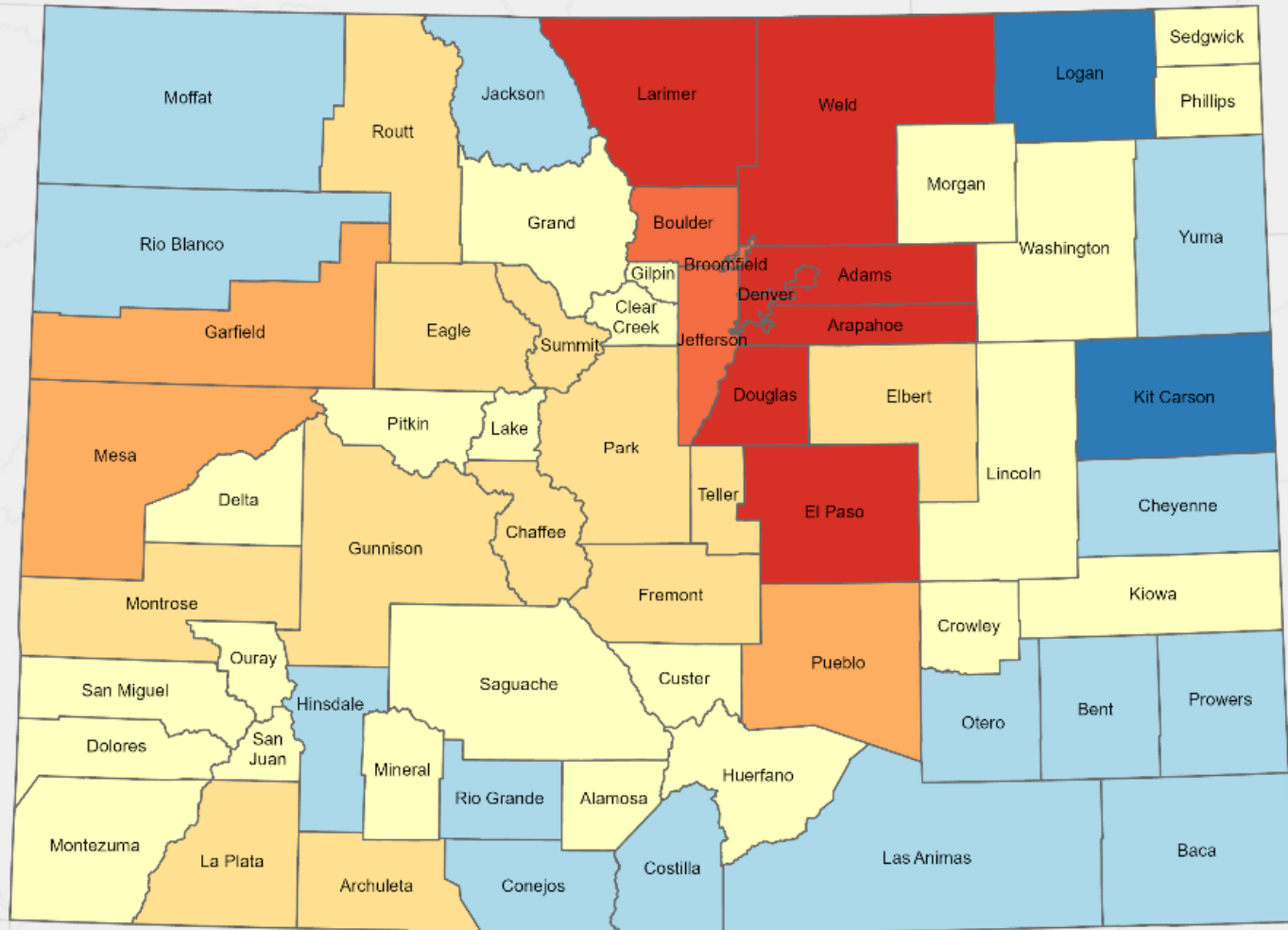
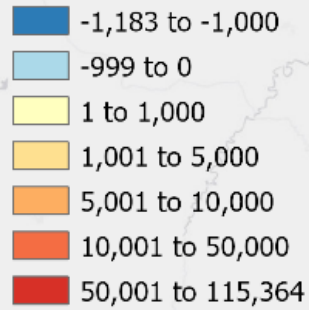
Colorado

- Increased by 66,193
- 1.1% growth rate
- Ranked 12th in total growth
- Ranked 18th in percent growth



Population Change by County 2010 to 2020

Population Change



Source: 2020 US Census

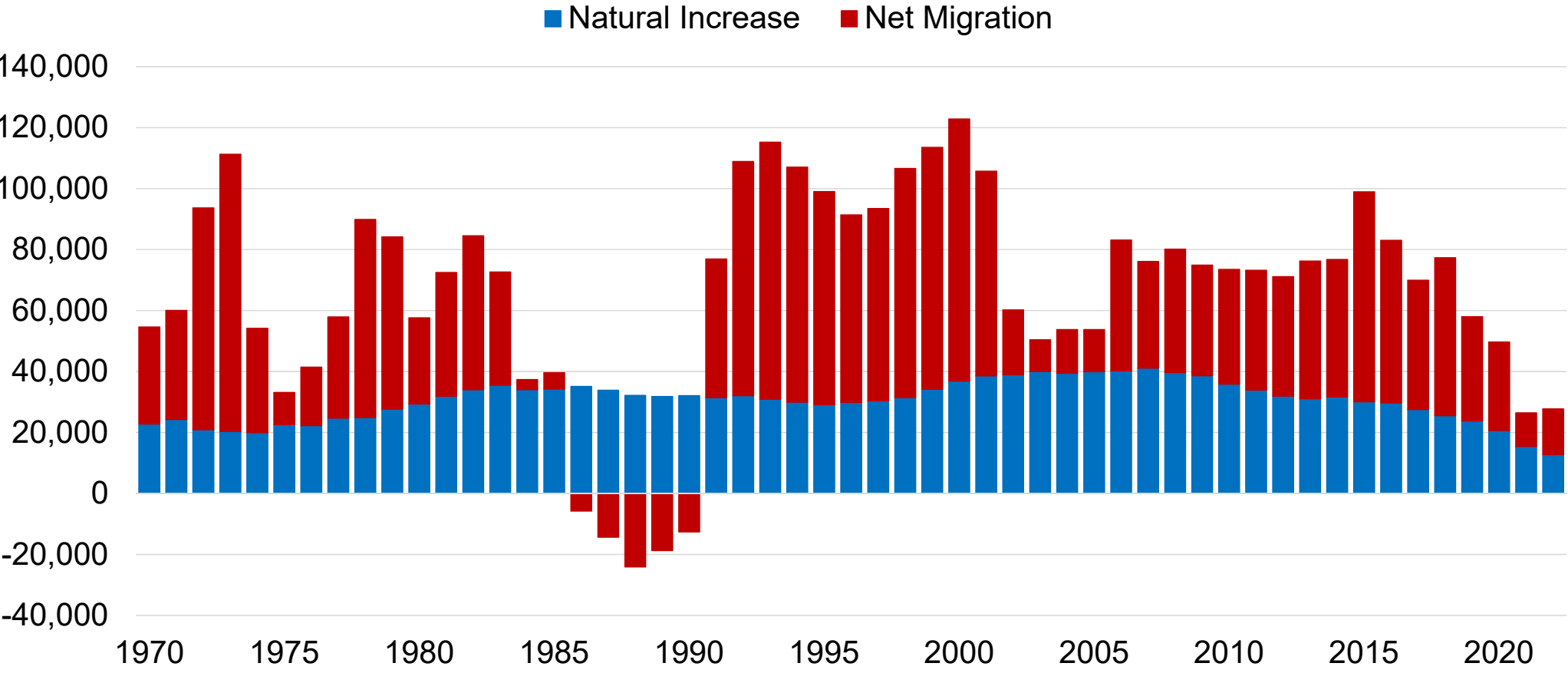
Esri, HERE, Garmin, USGS, EPA, NPS



COLORADO
Department of Local Affairs

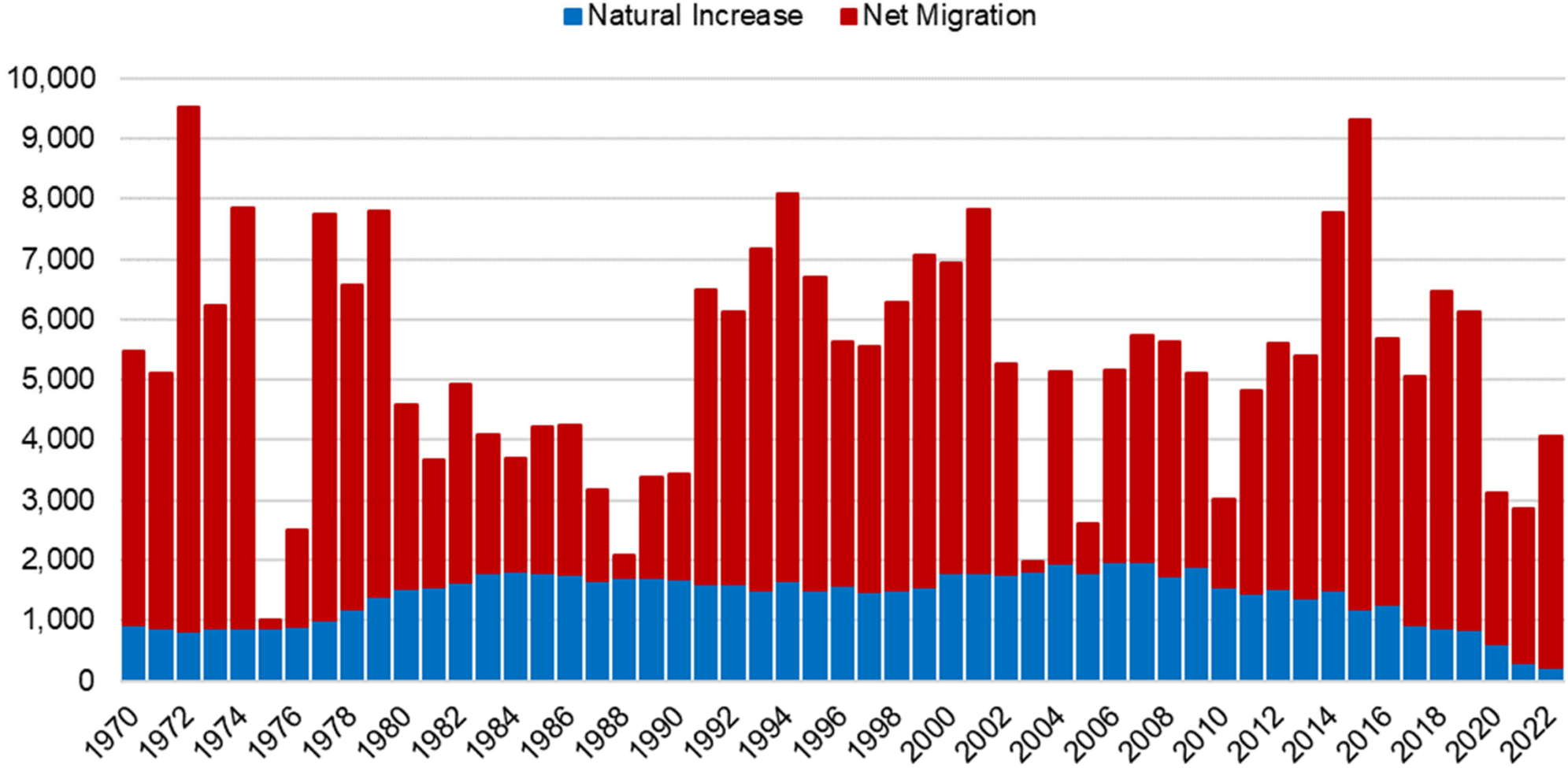
Annual Population Change

Colorado



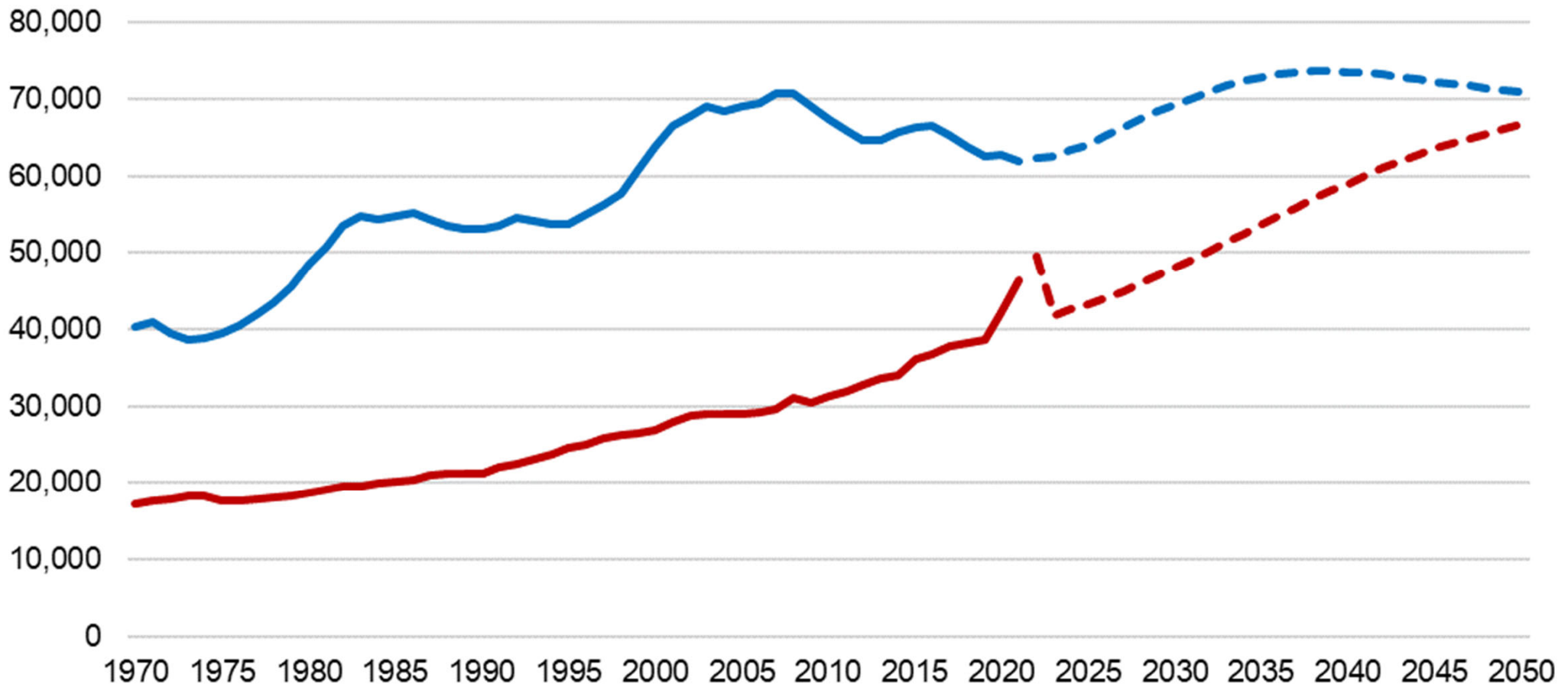
Annual Population Change

Larimer County

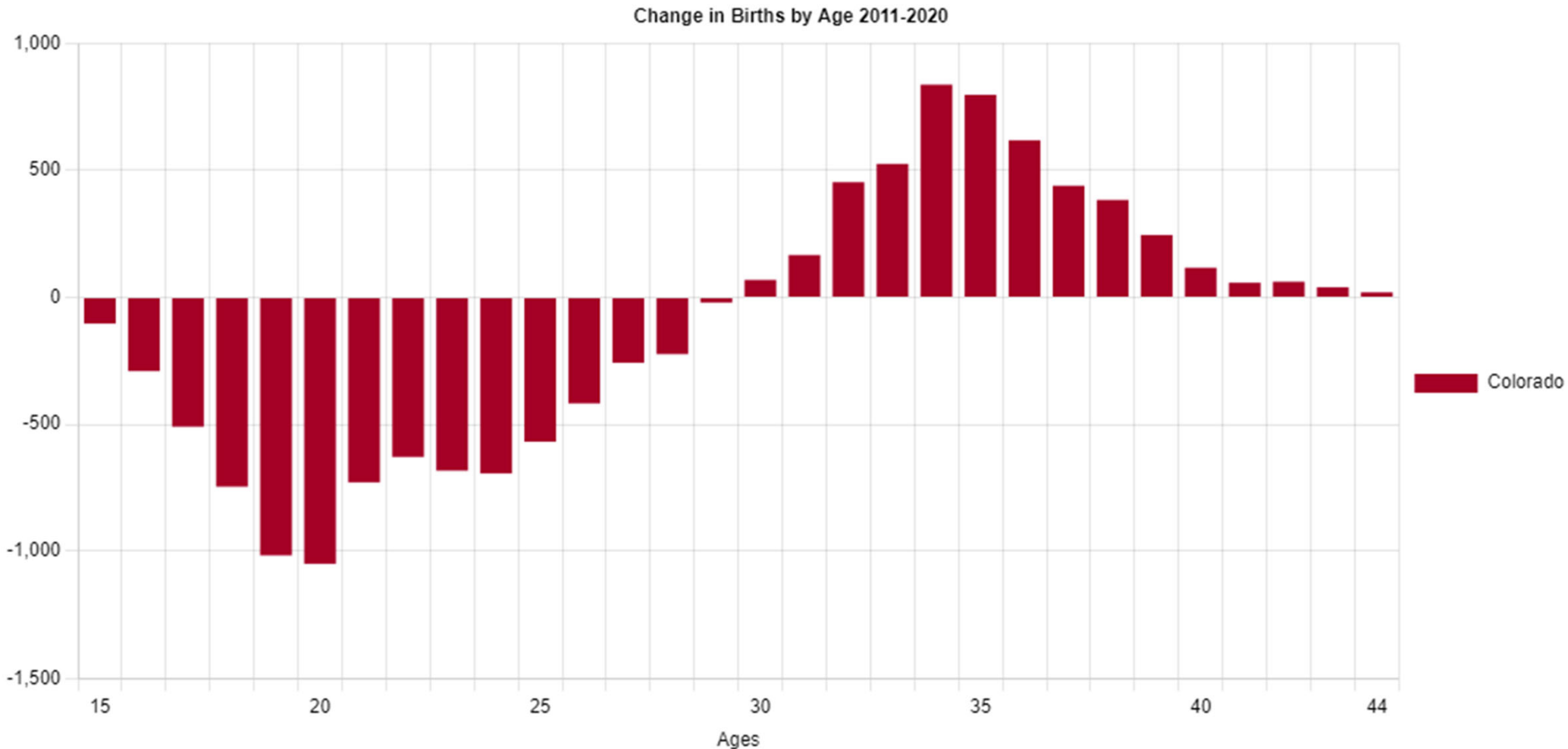


Colorado Births and Deaths, 1970 to 2050

— Births — Deaths - - - Births (Projected) - - - Deaths (Projected)



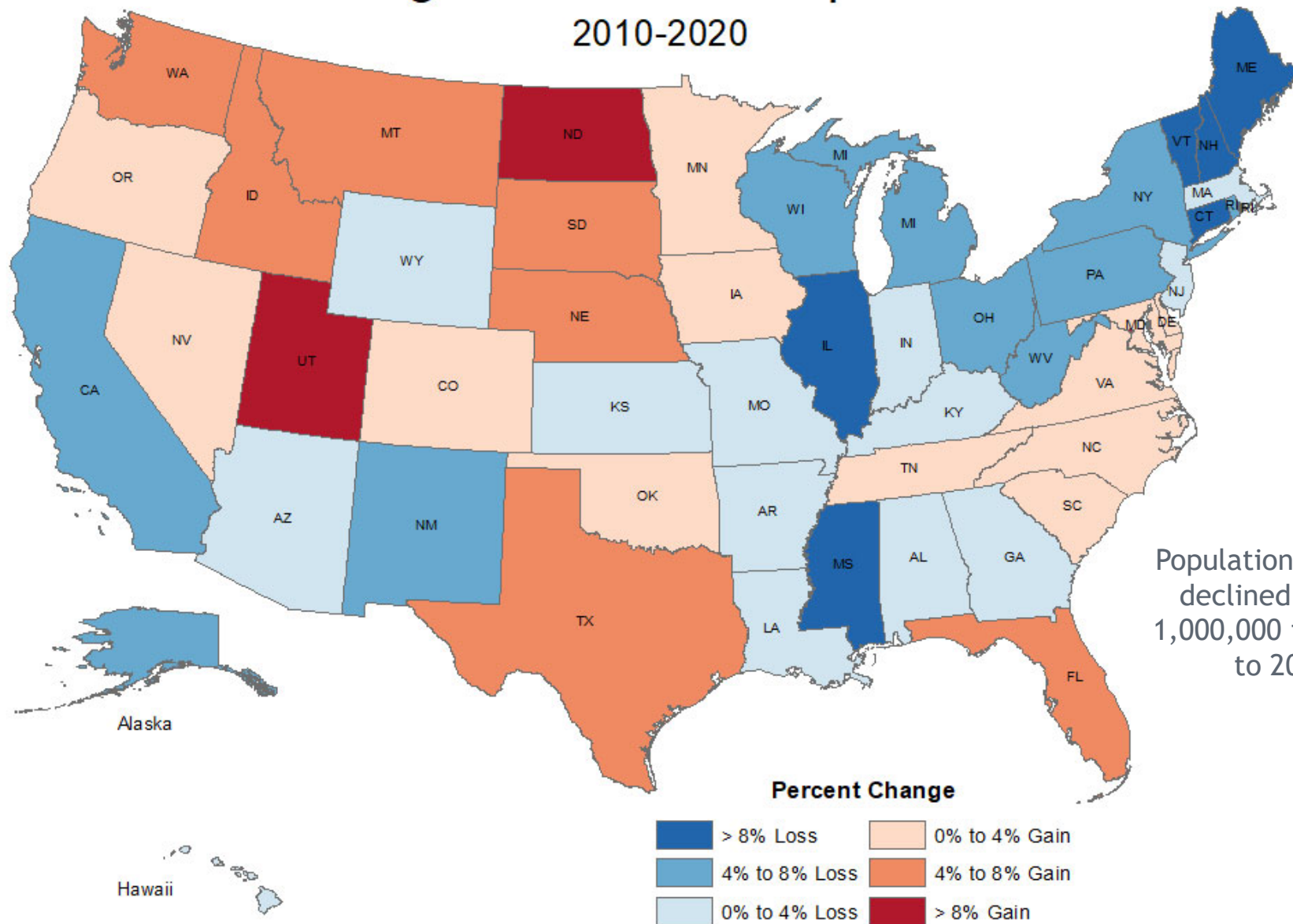
Change in Births by Age of Mother Colorado, 2011-2020



Source: Data and Visualization by Colorado State Demography Office. Print date: October 09, 2023



Change in Under 18 Populations 2010-2020



Population Under 18 declined by over 1,000,000 from 2010 to 2020.

Source: US Census Bureau
Map by Colorado State Demography Office

Created October 13, 2021

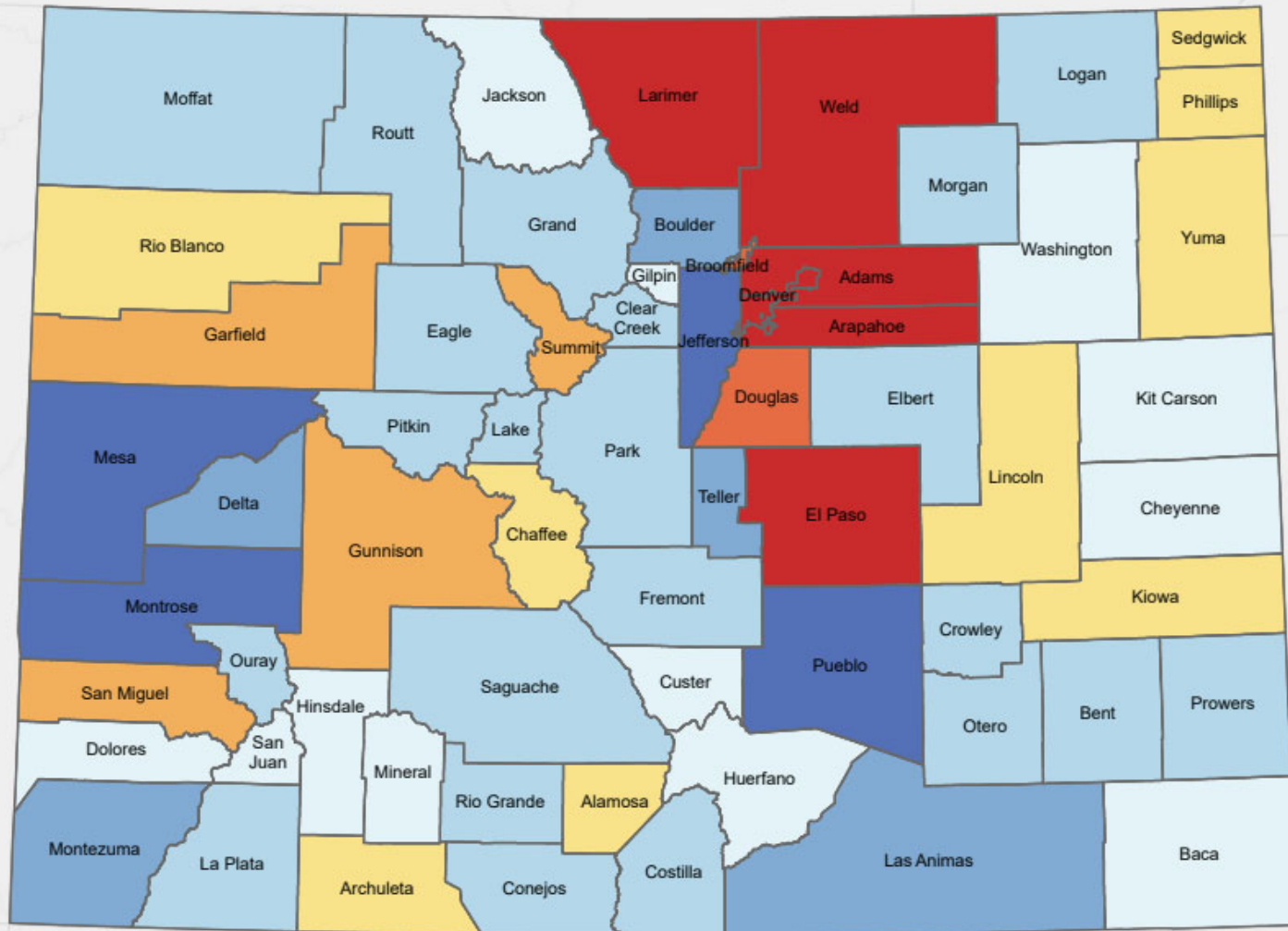
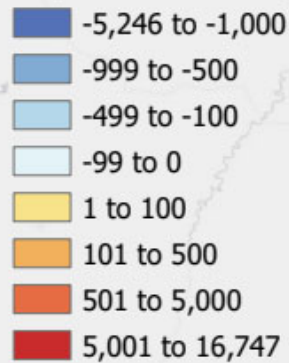


COLORADO
Department of Local Affairs

Source: U.S. Census Bureau, 2010 and 2020 Decennial Censuses

Under 18 Population Change by County 2010 to 2020

Population Change



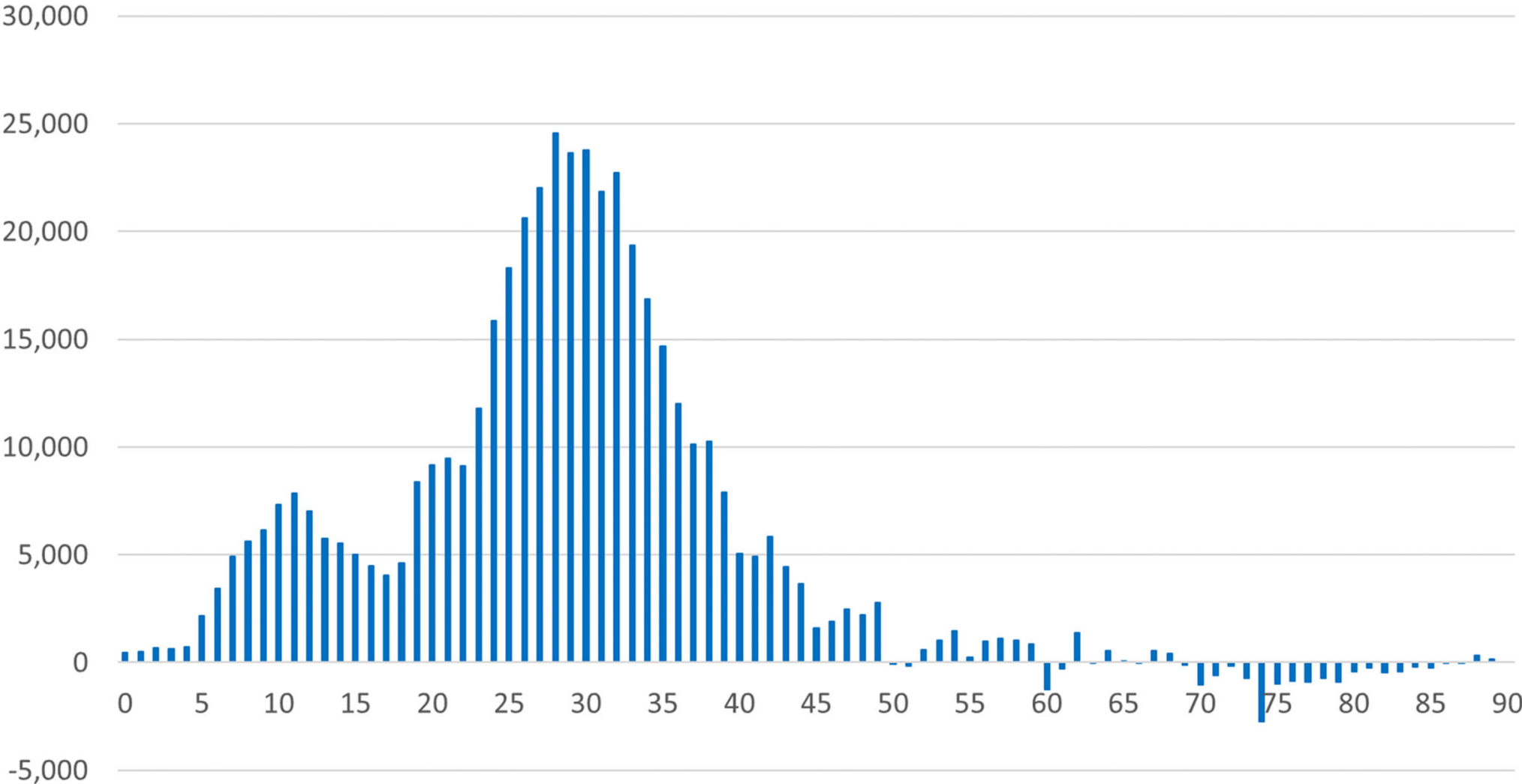
- Population Under 18 increased by 38K over the decade.
- Only 5% of the total 744,518 growth was from the under 18

Source: 2020 US Census

Esri, HERE, Garmin, USGS, EPA, NPS



Colorado Net Migration By Age, 2010-2020

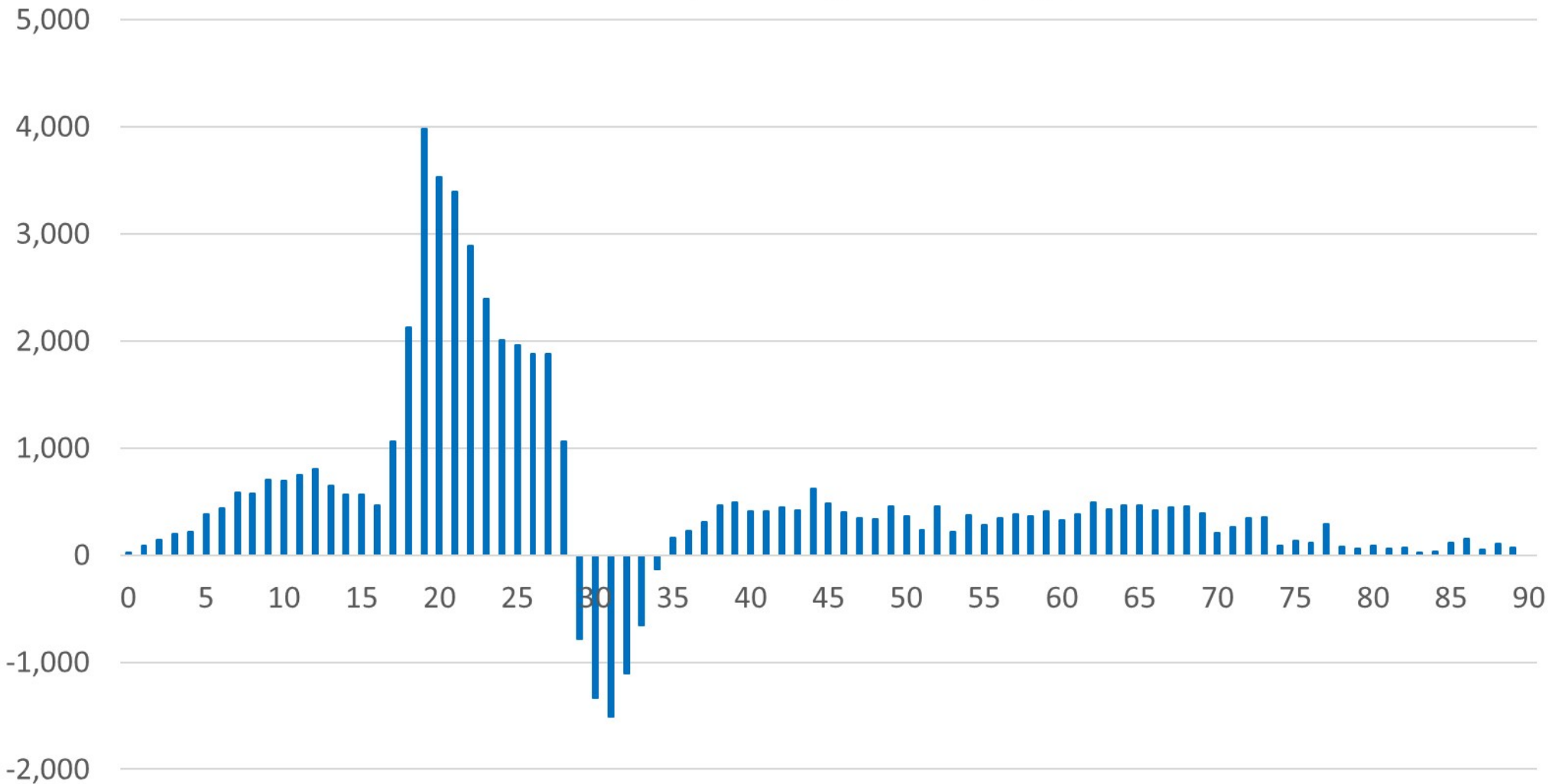


Colorado attracts early career young adults, families, and university students. Most older adults age in place. Trend has been consistent since the 1970's.

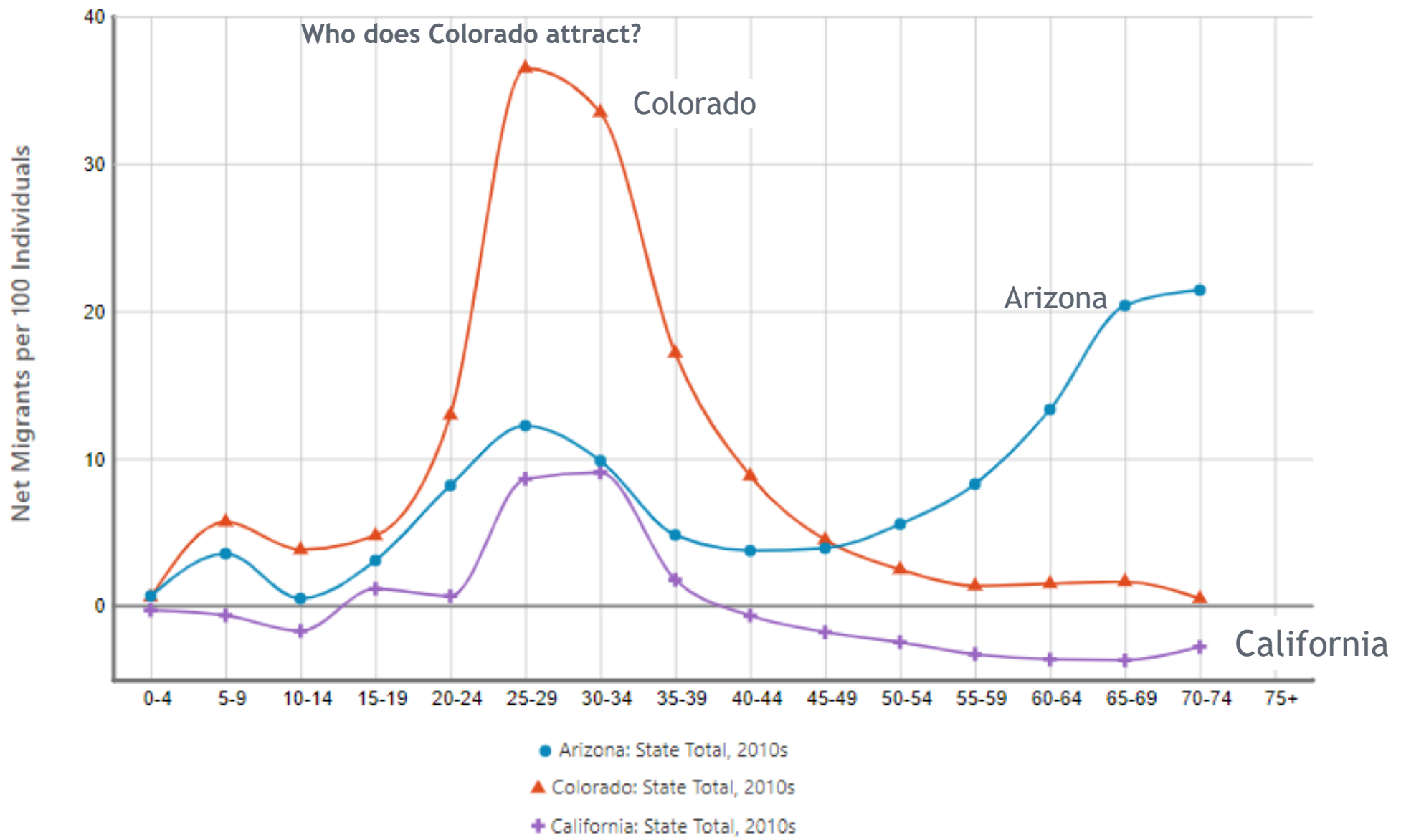


Net Migration by Age - Larimer

Larimer County Net Migration By Age, 2010s



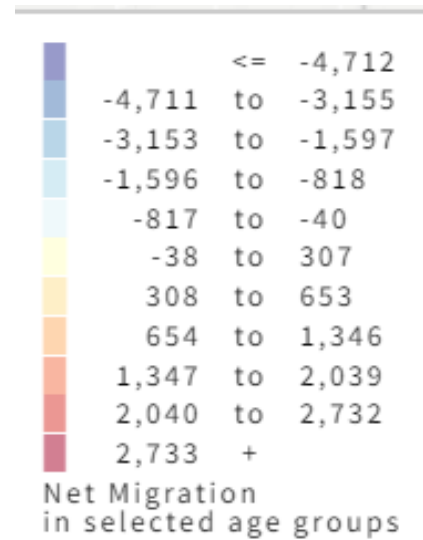
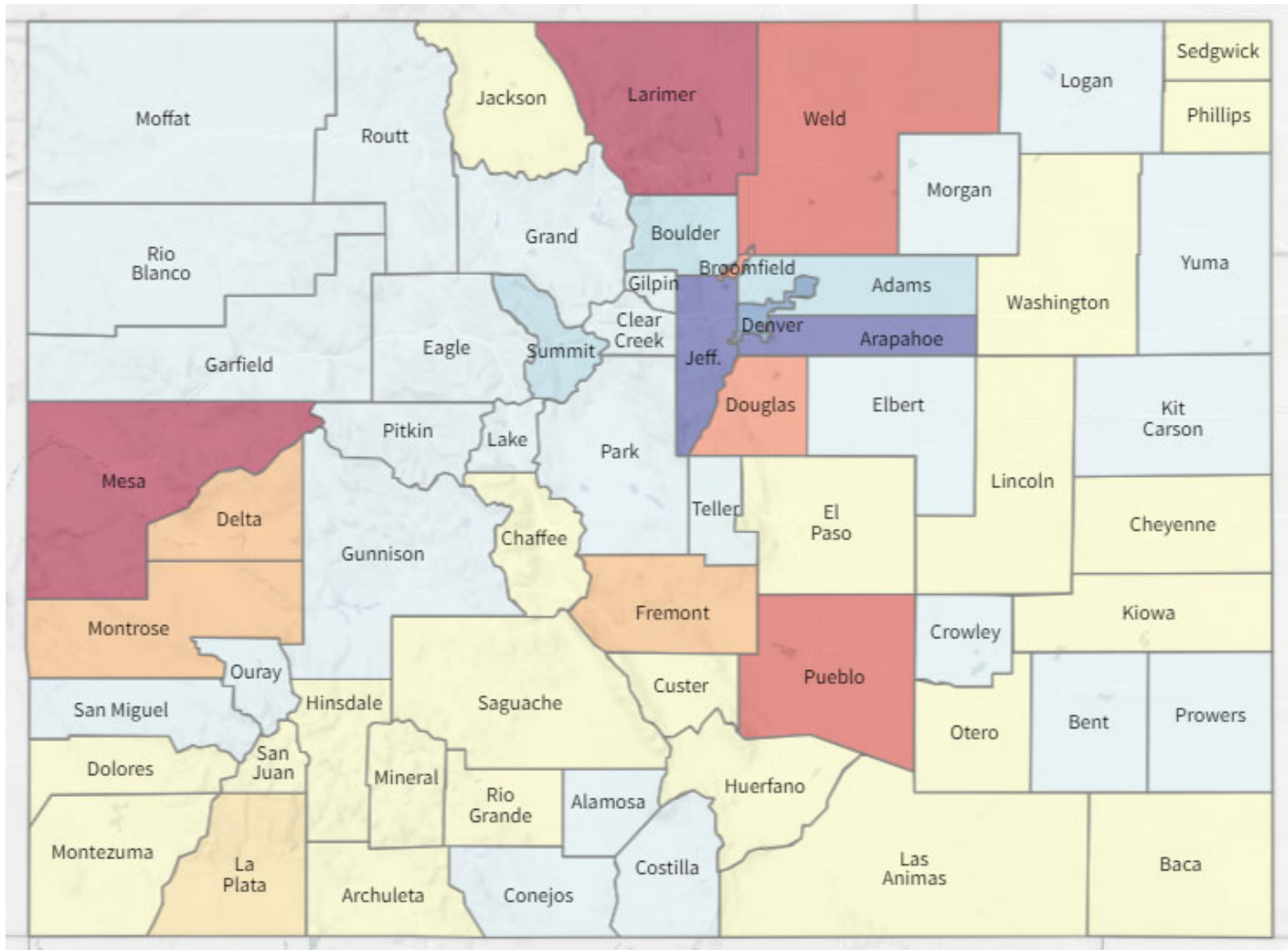
Net Migration by Age



Egan-Robertson, David, Katherine J. Curtis, Richelle L. Winkler, Kenneth M. Johnson, and Caitlin Bourbeau, *Age-Specific Net Migration Estimates for US Counties, 1950-2020*. Applied Population Laboratory, University of Wisconsin - Madison, 2023 (Beta Release). Web.



Net Migration 65 and over 2010-2020



Age Matters

- Preferences - where people shop and what they buy.
- Housing - type, size, mobility
- Labor Force
- Income
- Service Demands



Share of Population 65 Years & Over

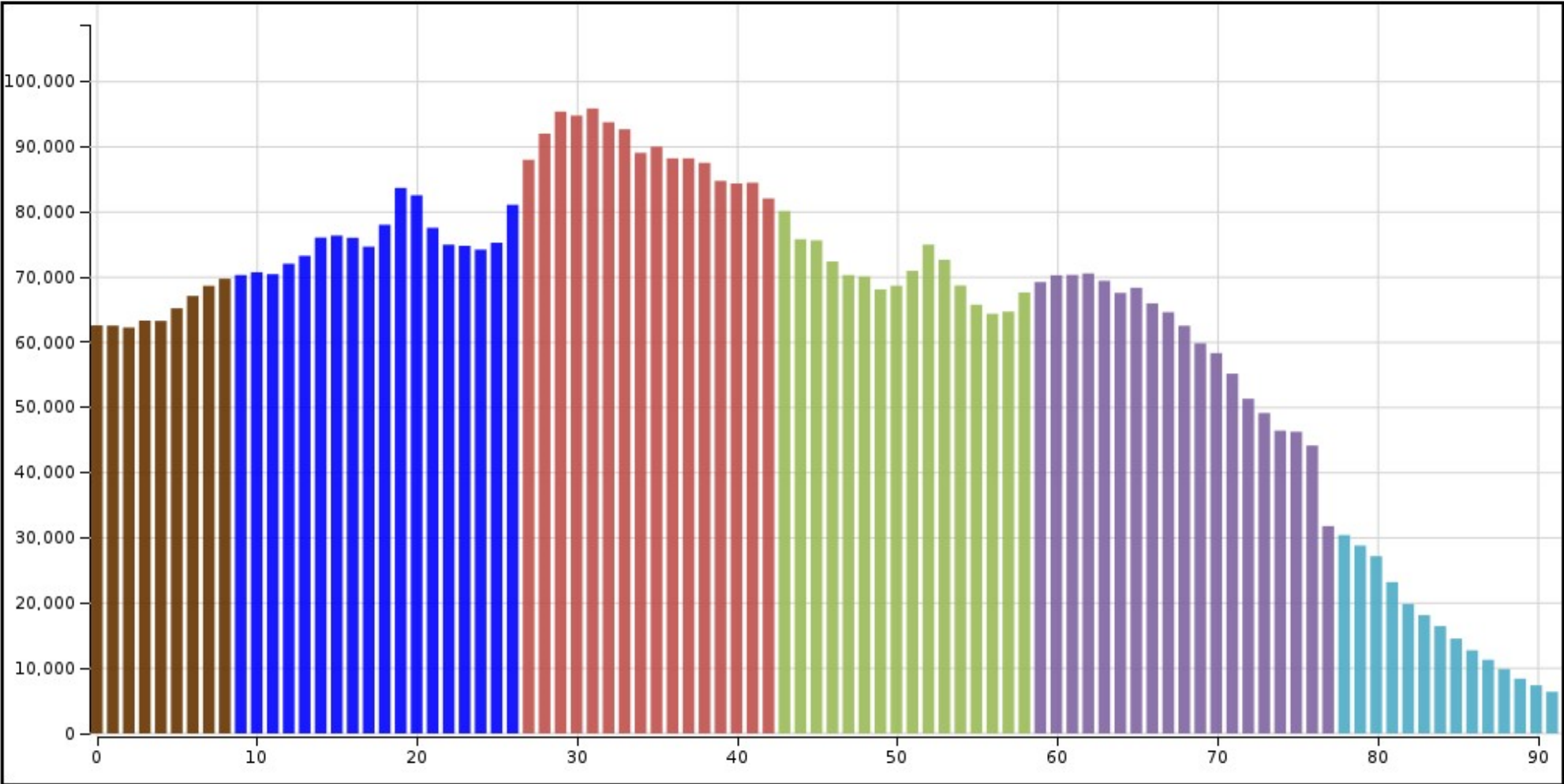
- 6th Youngest State in 2020
- 3rd Fastest-growing share of population 65 years and over between 2010 and 2020

Place	Total Pop % change 2010-20	65+ Pop % change 2010-20	2010 Share of pop 65+	2020 Share of pop 65+
United States	7.4%	38.6%	13.0%	16.8%
State of Colorado	14.8%	58.1%	10.9%	15.0%
El Paso County	17.4%	61.5%	10.0%	13.7%
Denver County	19.2%	38.0%	10.4%	12.0%
Douglas County	25.4%	129.0%	7.1%	13.0%
Clear Creek County	3.4%	76.2%	12.5%	21.2%



Colorado

2023



- Generation X (1965 - 1980)
- Baby Boomers (1946 - 1964)
- Silent Generation (1928 - 1945)
- Greatest Generation (- 1927)
- Future Generations (2030 -)
- Generation Alpha (2015 - 2029)
- Generation Z (1997 - 2014)
- Millennials (1981 - 1996)



COLORADO
Department of Local Affairs

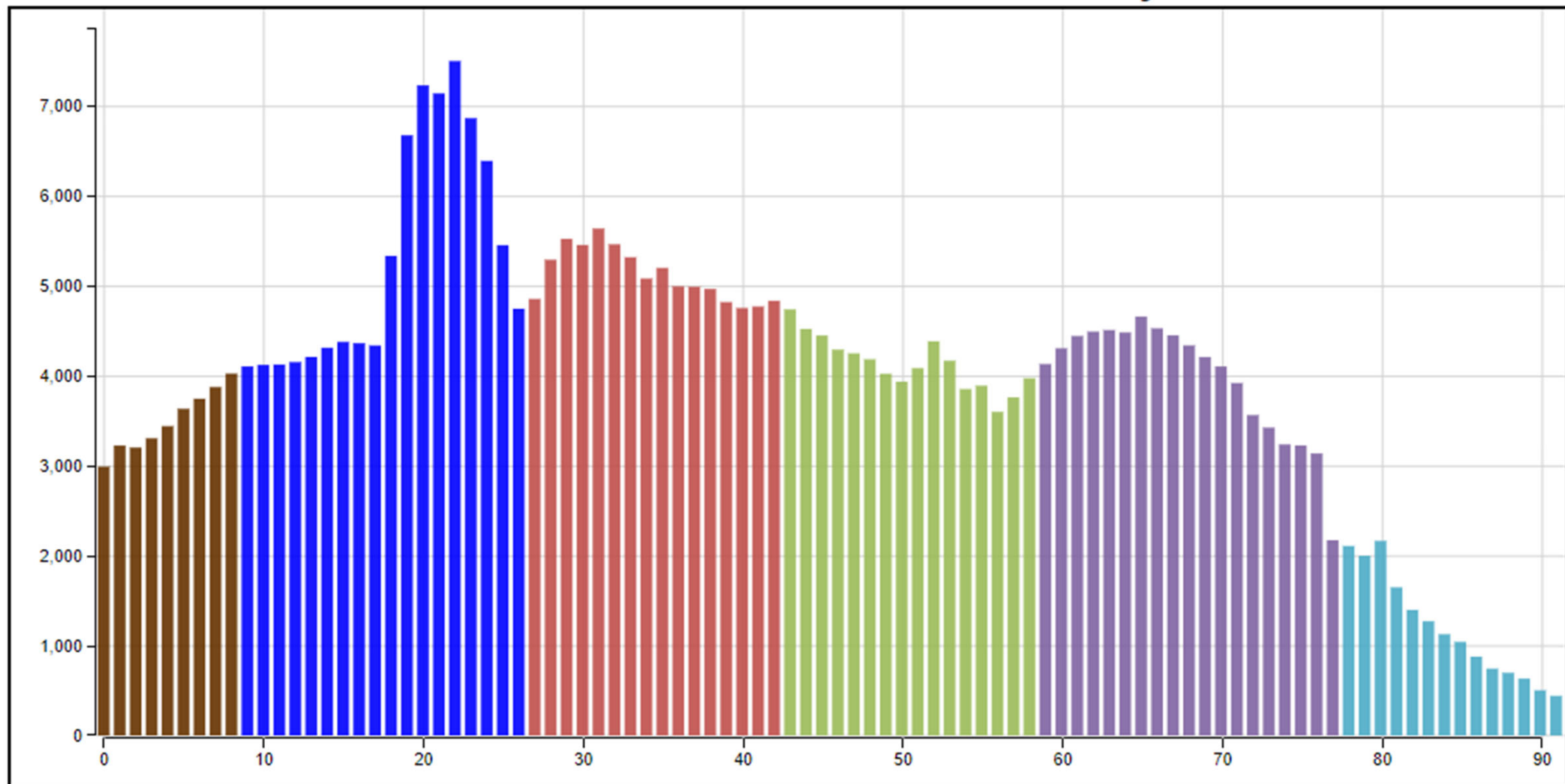
<https://gis.dola.colorado.gov/Age-Animation-Bars/>

Animate

Download Image

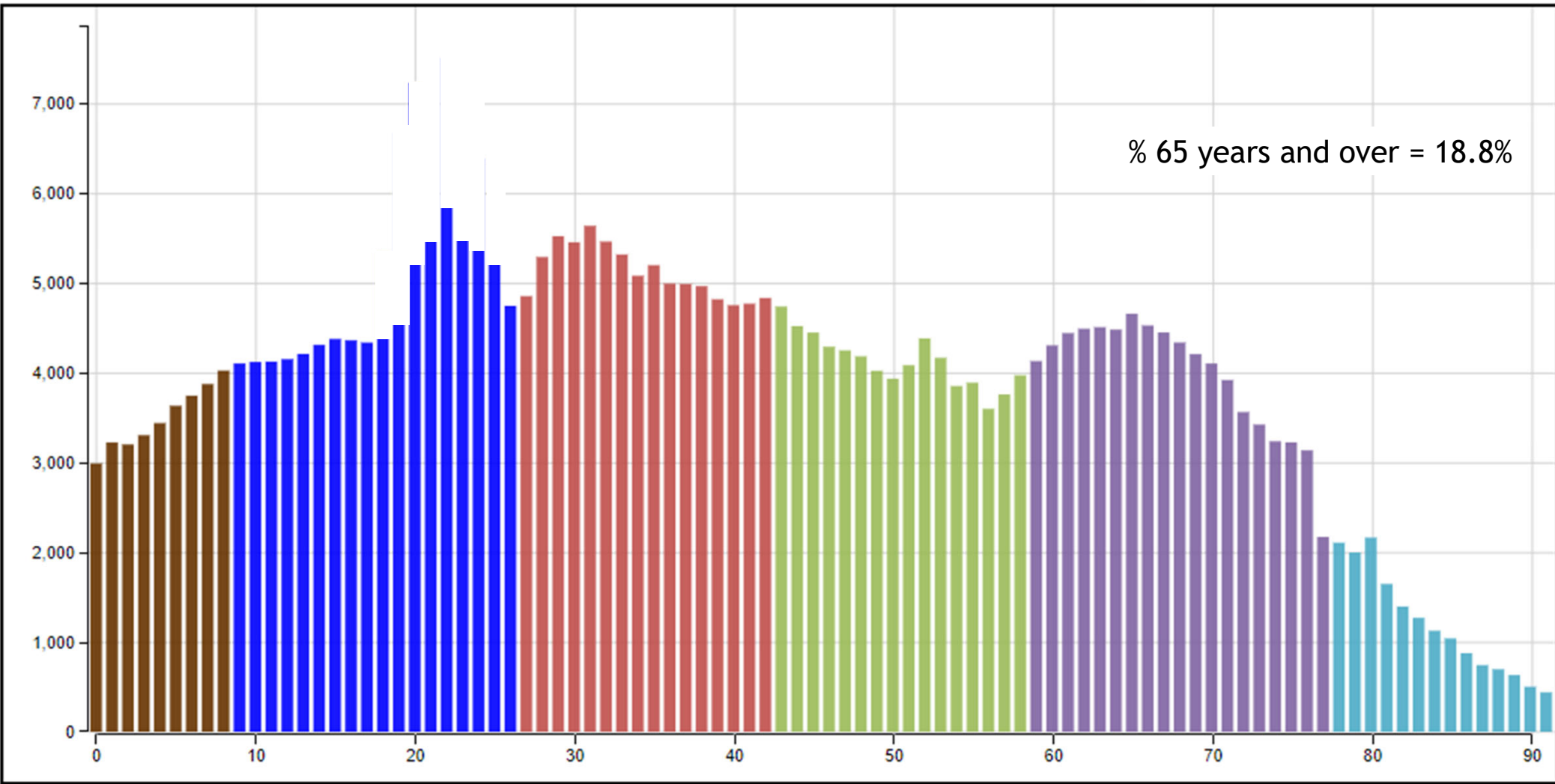
Larimer County

2023



- Generation X (1965 - 1980)
- Baby Boomers (1946 - 1964)
- Silent Generation (1928 - 1945)
- Greatest Generation (- 1927)
- Future Generations (2030 -)
- Generation Alpha (2015 - 2029)
- Generation Z (1997 - 2014)
- Millennials (1981 - 1996)



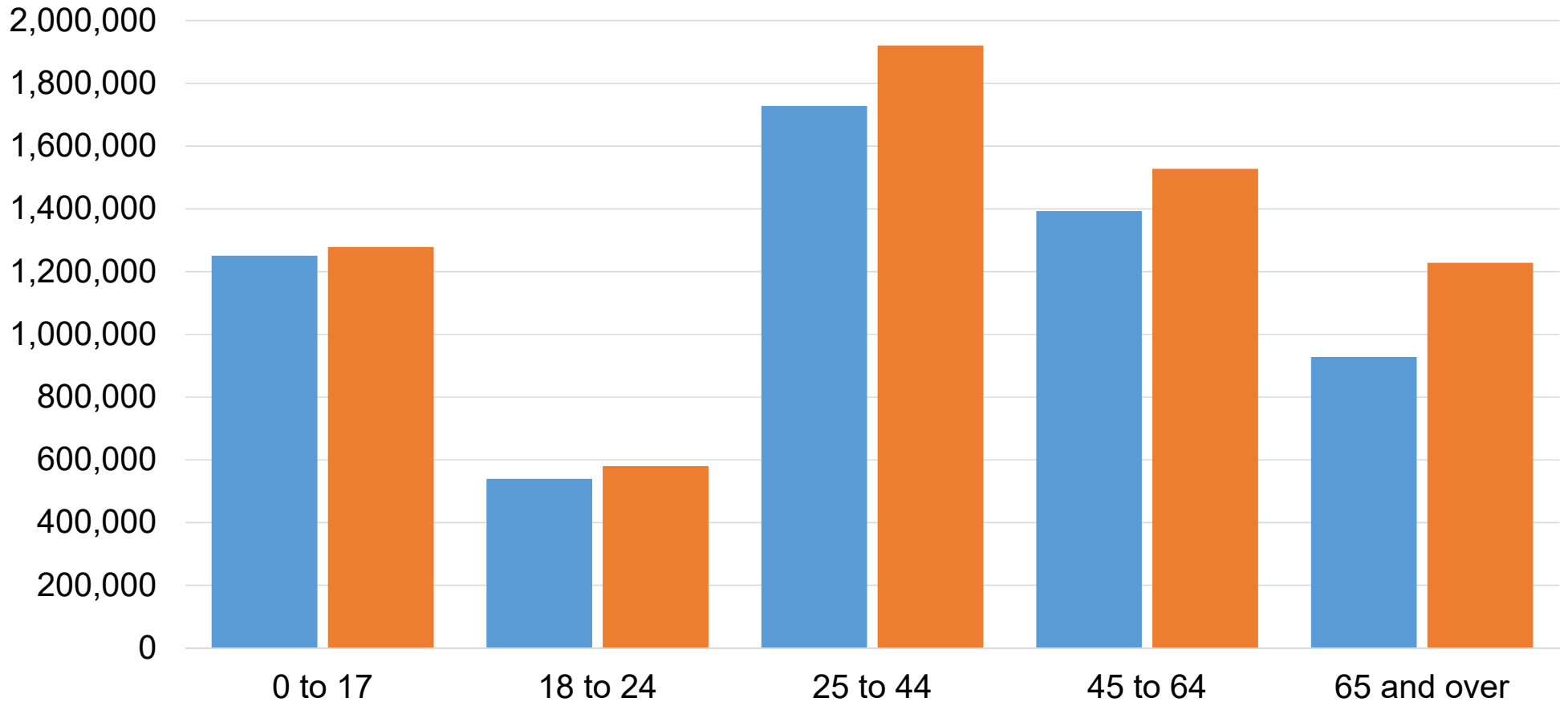


- Generation X (1965 - 1980)
- Baby Boomers (1946 - 1964)
- Silent Generation (1928 - 1945)
- Greatest Generation (- 1927)
- Future Generations (2030 -)
- Generation Alpha (2015 - 2029)
- Generation Z (1997 - 2014)
- Millennials (1981 - 1996)



Colorado - Population by Age

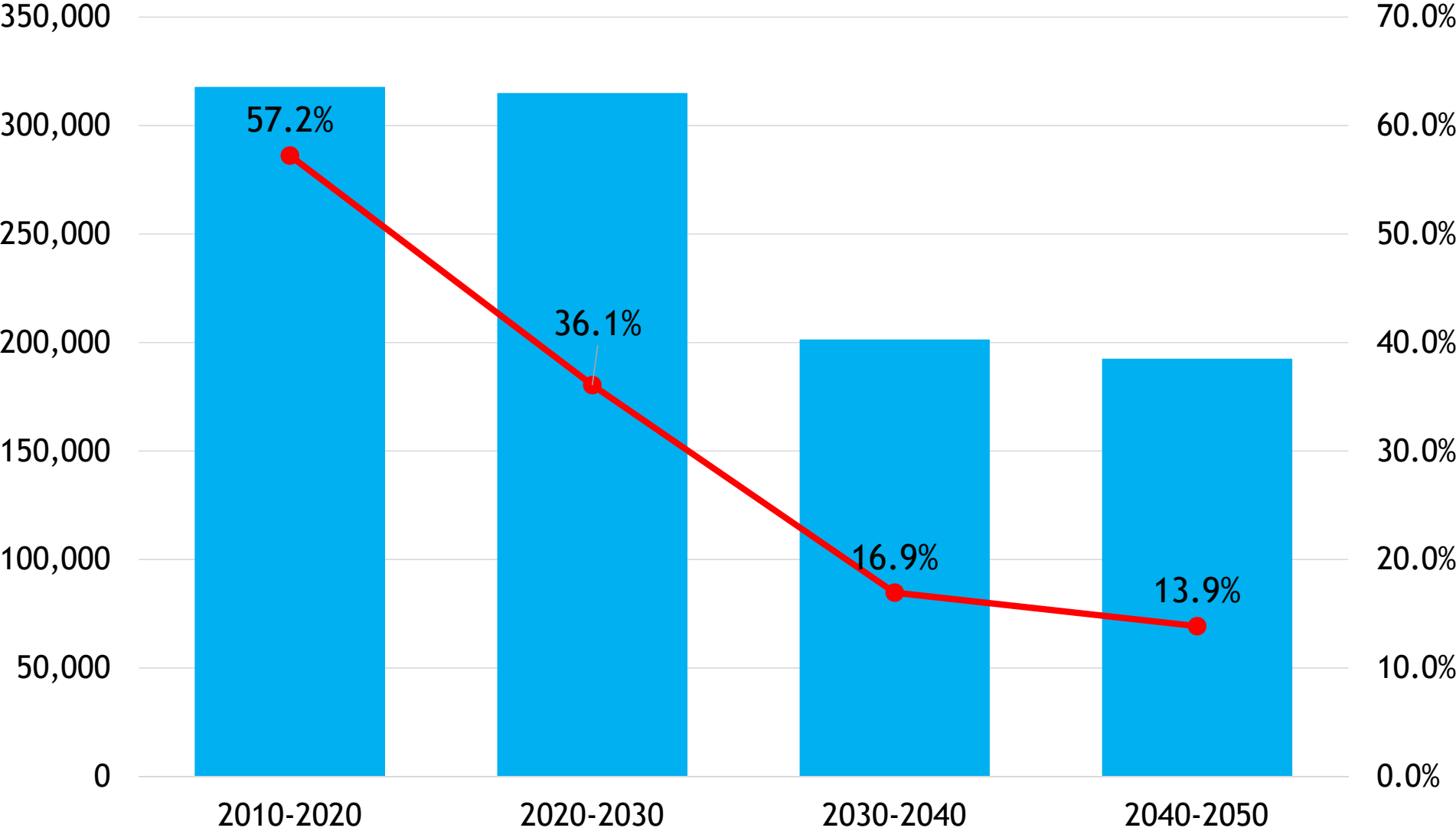
■ 2022 ■ 2032



2022-2032	0 to 17	18 to 24	25 to 44	45 to 64	65 and over	Total
pop change	27,789	40,552	192,493	134,608	300,028	695,470
% change	2.2%	7.5%	11.1%	9.7%	32.3%	11.9%

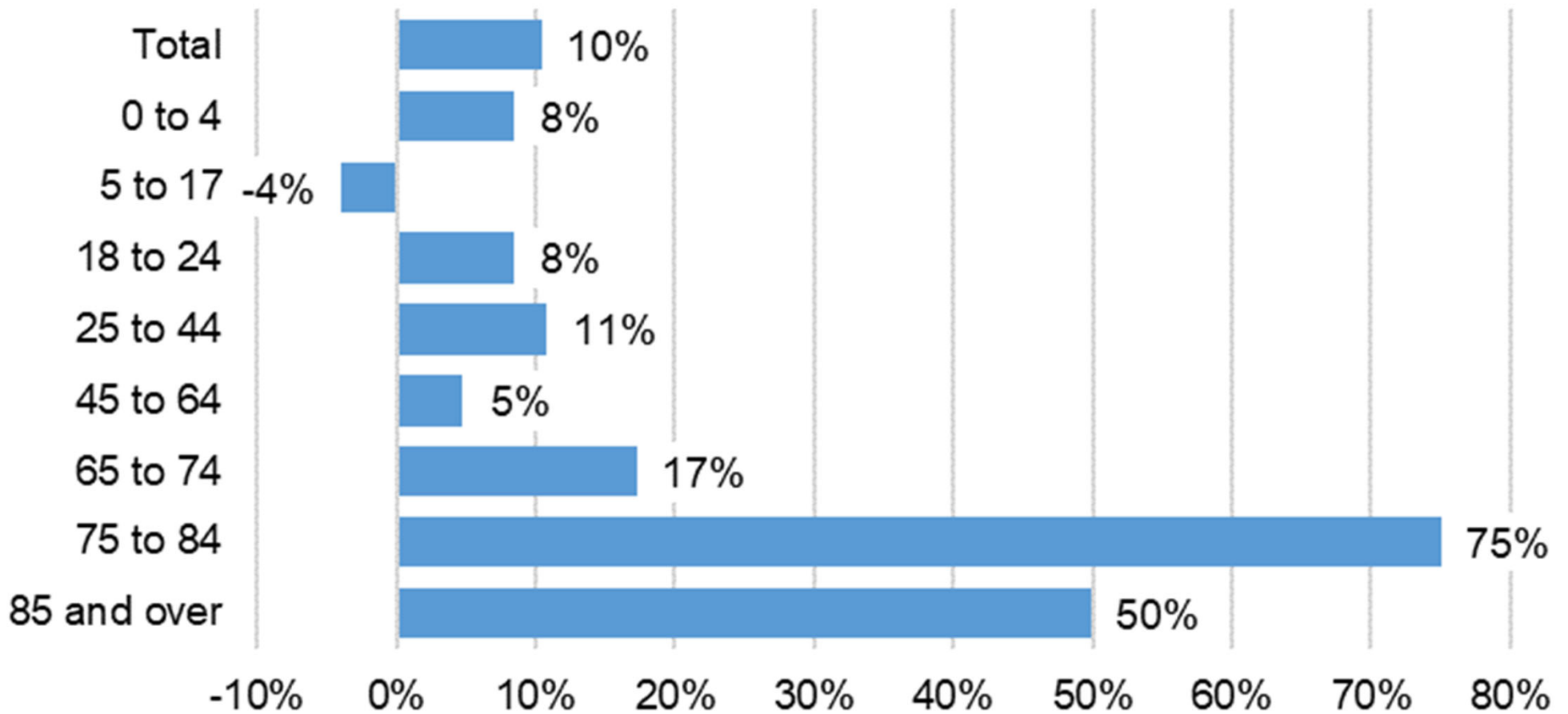


Forecasted Growth of 65 +



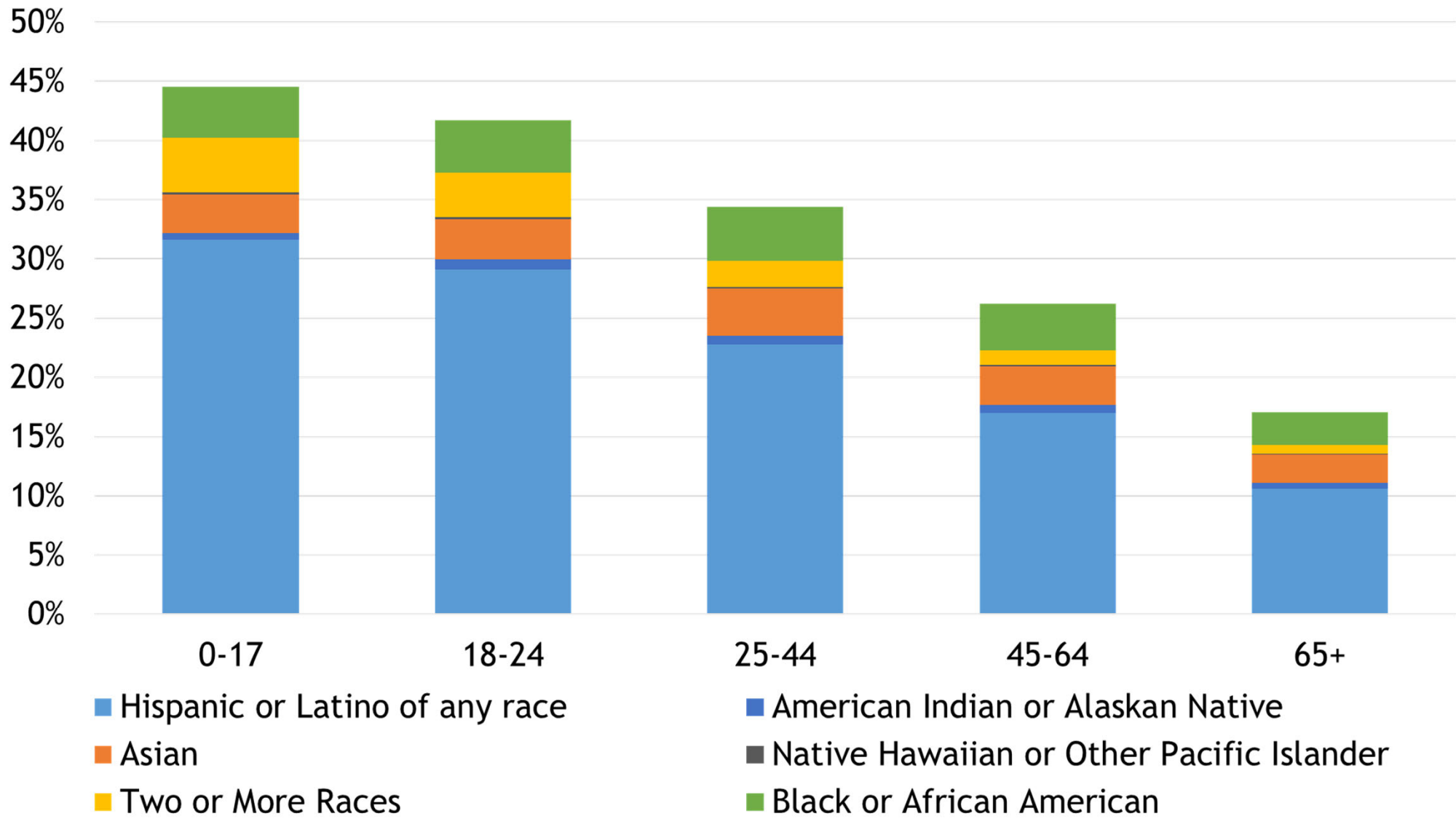
Aging Population 2020-2030

Projected Percent Change by Age Group - Colorado



Diversity by Age

2020 People of Color Share of Population by Age



Implications From Aging

- Important Economic Driver
 - Consumer - spend money to purchase goods and services
 - health care and accommodations/food service largest expenditures
 - Supports about 1 job for every 4 people over the age 65.
- Housing
 - Rehab/remodel - more accessible to age in place
 - Move less often - impacts flow of housing stock
 - Owners - 82% owner occupied
 - Significant wealth, Transition planning - avoid probate
 - 570,250 Households 65+
 - 42% Living Alone (240,000)



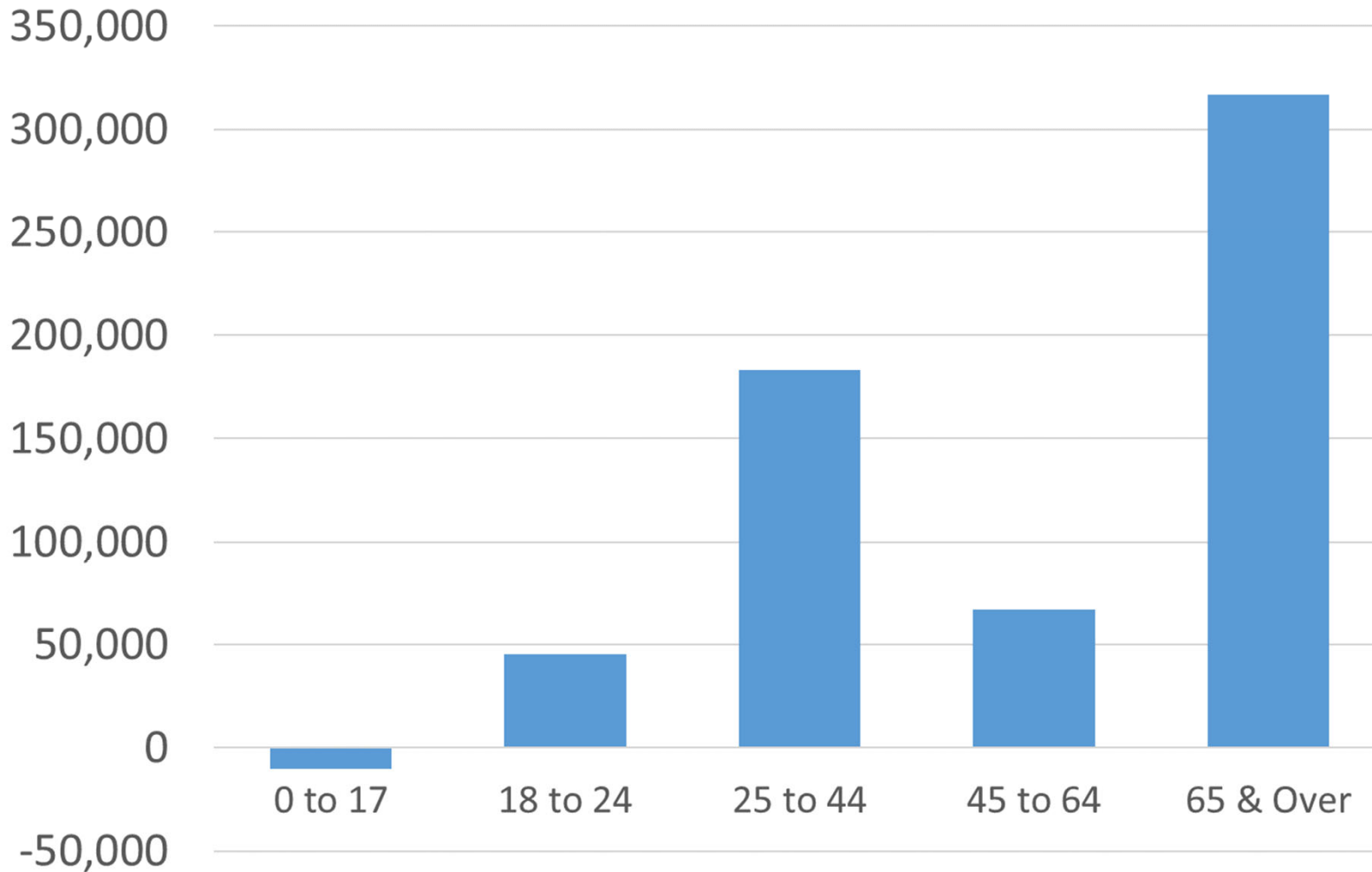
Implications From Aging

- Labor Force
 - Employed adults ages 65+ increased 600% between 2000 and 2022, from 30,000 to over 180,000
 - This decade, forecasting 40,000 retirements per year, assuming increased participation for everyone ages 55+ (drives demand for migration)
 - Succession and transition planning - Industries with larger share of older workers - health care, utilities, manufacturing, agriculture



Colorado Aging

Colorado Population Change By Age, 2020-2030



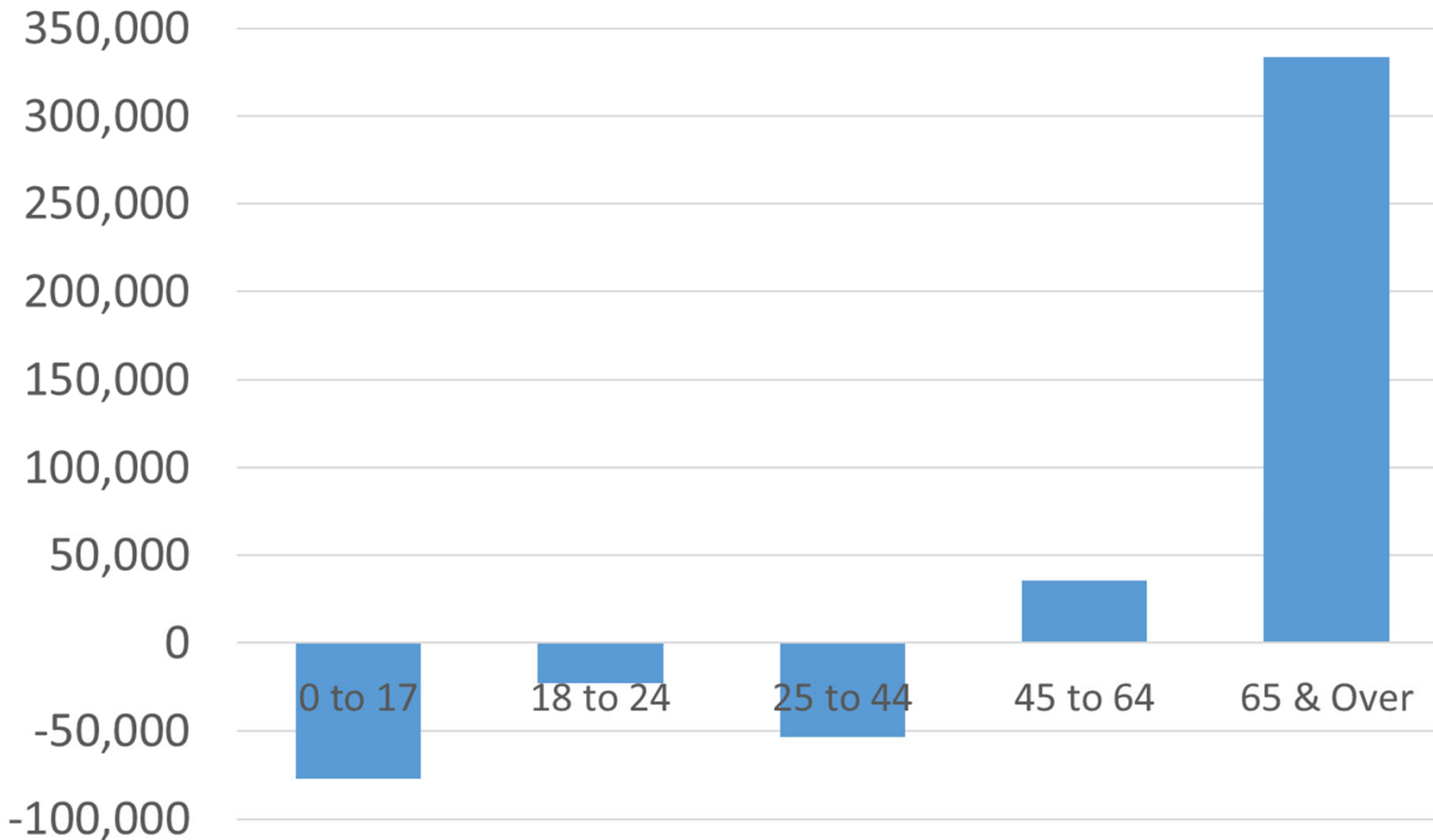
65 & over represents 53% of total growth

How much of the growth in each age group is due to assumed migration?



Colorado Aging

Colorado Population Change By Age,
With Zero Net Migration, 2020-2030



If we assume no net migration over the next decade in Colorado:

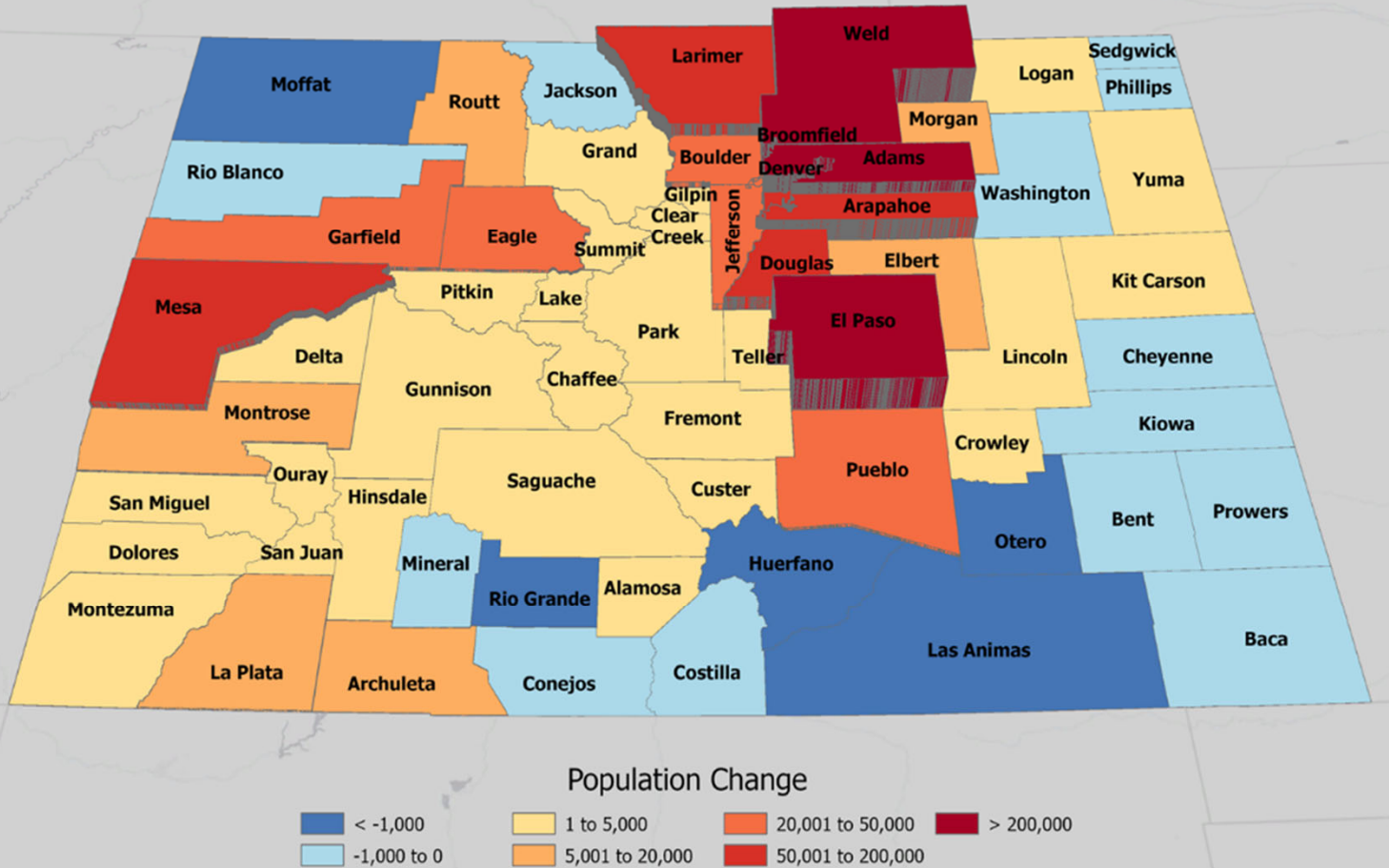
- Statewide decline in the prime working age population
- All population growth could be attributed to the 65 & over population.



Population Forecast 2050

7.49 million

Projected Population Change
2020 - 2050



Change 2020-2050
State: 1.65 million
Front Range: 1.47M
Western Slope: 170K
Central Mtns: 7K
San Luis Valley: 0
Eastern Plains: 13K

Uncertainties

- International migration
- Slower national growth, competition for labor?
- Housing supply, costs compared to rest of nation
- Industry changes, automation
- Natural disasters, water

Source: Colorado State Demography Office

October 2023



COLORADO
Department of Local Affairs

Source: State Demography Office, 2022

Forecast Factors and Summary

- US population growth is slowing
- Births have slowed, deaths increase
- Migration/Mobility slowing, International migration uncertainty
- Aging - 65+ fastest growth, slower growth in young adults.
- Labor Force - more competition, new jobs + retirements (400K this decade) +remote workers
 - Retirements drive demand for migration
- Consumers/Jobs - Age drives consumption
 - Jobs drive migration - High and low wage services - growth industries
- Community Services
 - Housing - move less, household size
 - Transportation, public finance, others





Nancy Gedeon

nancy.gedeon@state.co.us

303-864-7755

State Demography Office

Department of Local Affairs

demography.dola.colorado.gov

demography.dola.colorado.gov



COLORADO
Department of Local Affairs